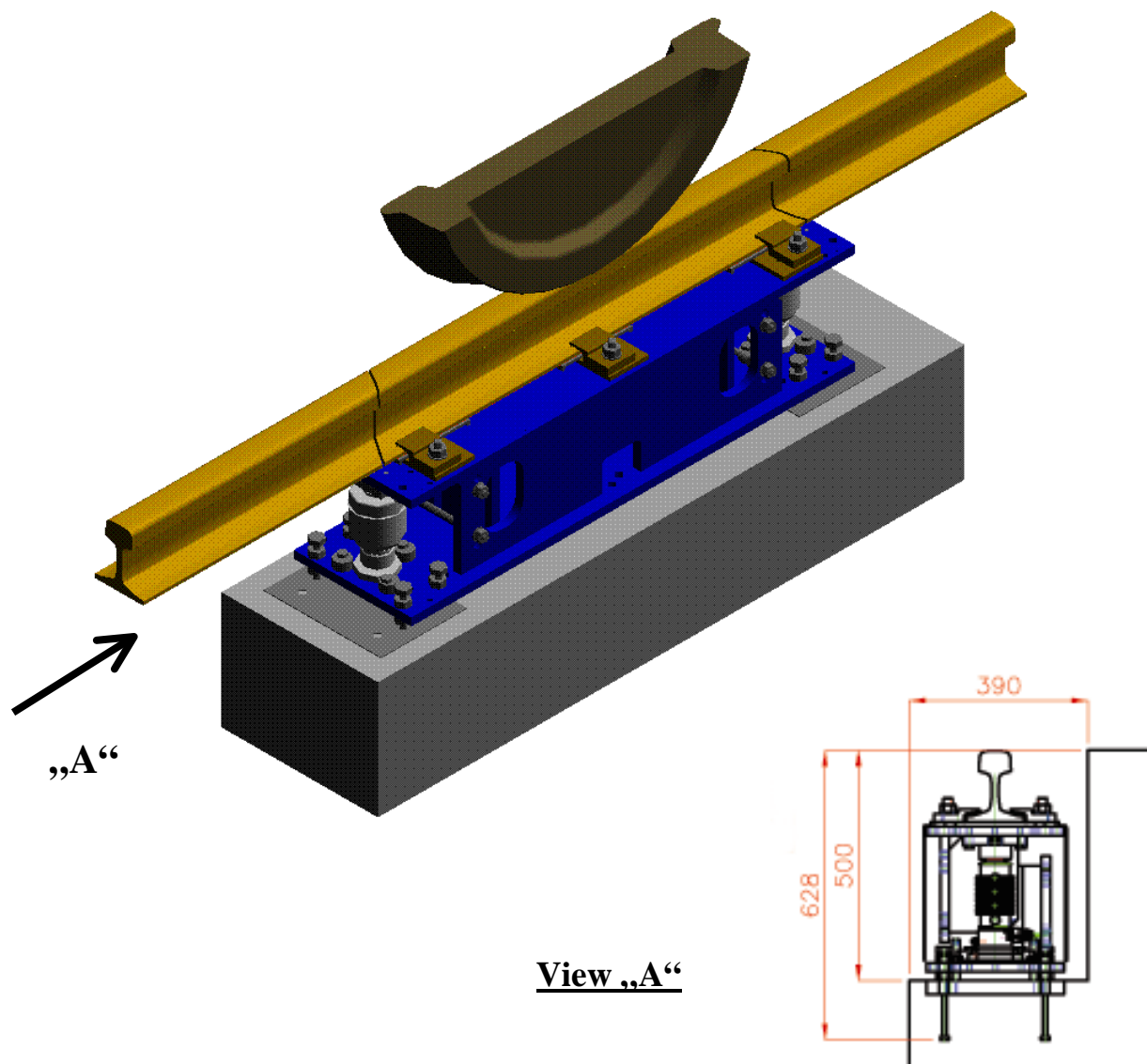


## RLW-G-2005 load cell units Compact wheel load weighing system

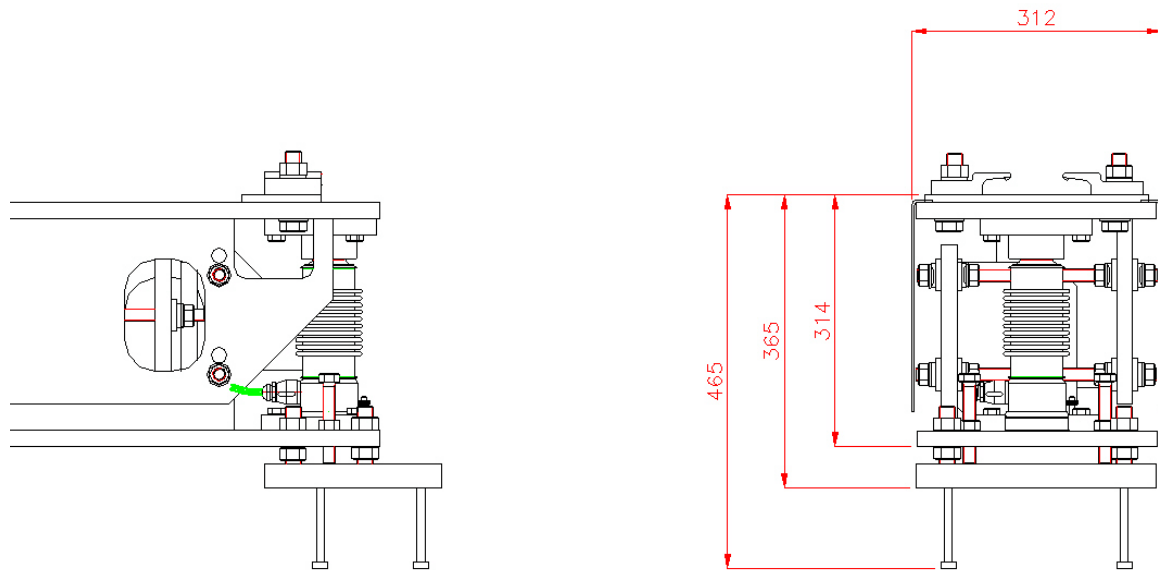
- easy integration in a rail section
- static measuring of wheel / axle loads
- may be used with optional MVO + software as a test bench



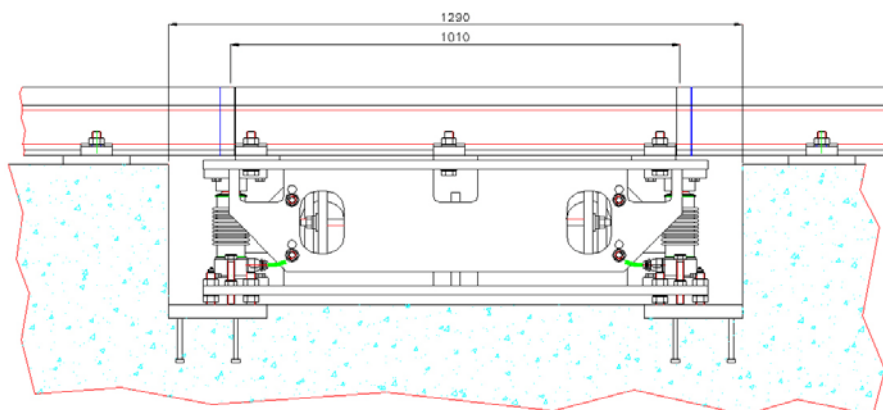
**RLW-G-2005** – this wheel load scale comprises resolved load cell units with standard CPR series strain gauge load cells.

**RLW-G-2005** offers the benefit of a simple, compact measuring unit, easy to mount, adjust reliably and trim. Our portable calibration equipment is available to the user for this purpose.

**RLW-G-2005 design:**



- Stable steel welded compact box-type construction, protected at the sides by sheet steel covers. May be mounted directly on steel girders or supports or in a foundation using the concrete anchoring plates supplied.
- With two CPR-20 t series precision load cells each, resolution 4000 (d) units, approved to OIML R60. The 2 load cells are linked to a load cell unit via an external terminal box.
- Load introduction via special hardened interchangeable load supports.
- Adjustable longitudinal and transverse control arm construction.
- By means of the flexible rail securing components supplied the most common rail sections (S49, S54, UIC54, UIC60) may be directly mounted on the support plate above the load cells. Precision gauge setting via the securing components is possible (rails are not included in the delivery scope)
- Individual height adjustability on the longitudinal and transverse plains via setscrews for optimum use in a certified rail. May be readjusted at any time
- Connection to load cell is via standard terminal box.
- Output to the weighing indicators of the (e.g.) D 70v series (PTB approval, CE symbol) features a (9-pin Sub-D) connector as standard.



Mounting drawing  
**RLW-G-2005**

### RLW-G-2005 technical data

|                                    |                          |
|------------------------------------|--------------------------|
| Maximum load                       | 150 kN                   |
| Pitch                              | 0.01 kN                  |
| Measuring uncertainty              | +/- 0.5 % of meas. value |
| Load cell precision                | 0.1 %                    |
| Length of the active weighing zone | 1000mm                   |

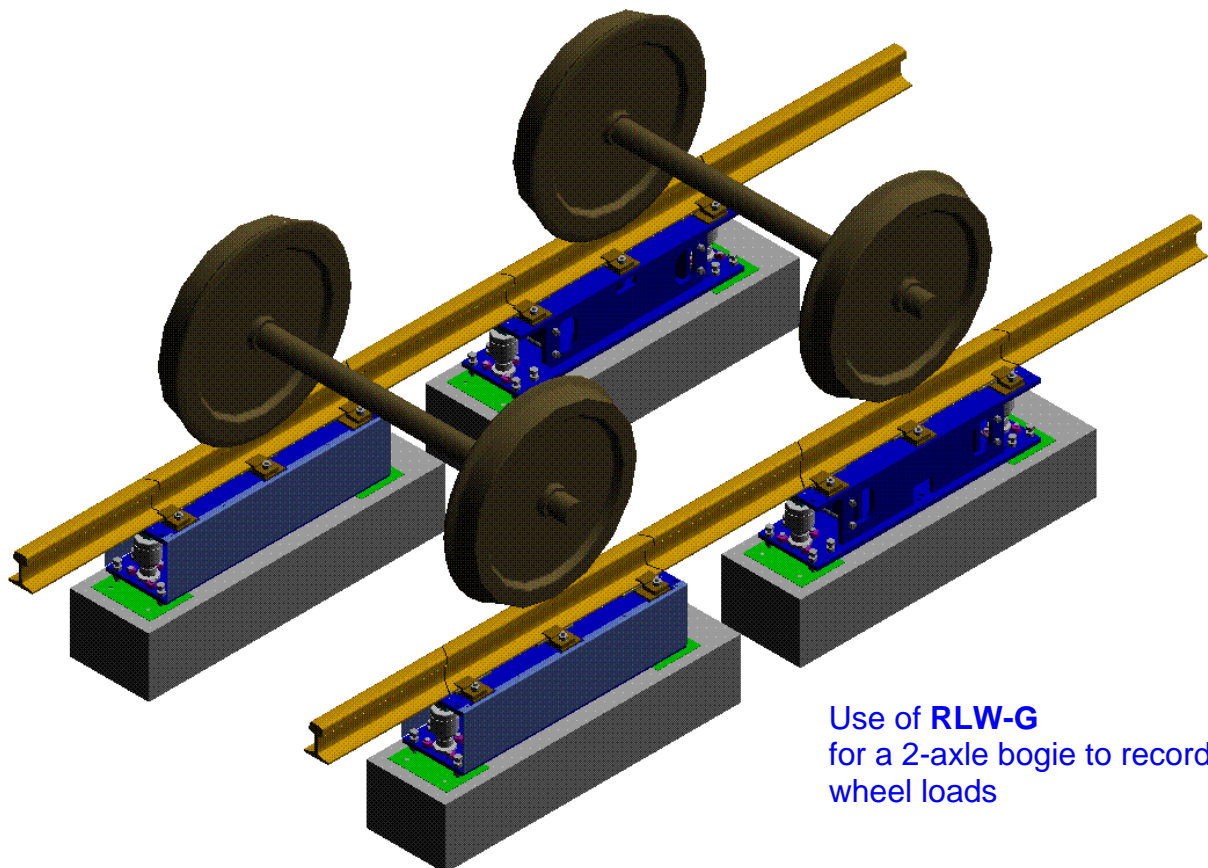
(please refer to product info for further details  
No: 1110 – CPR analogue load cell)

### Standard CPR series strain gauge load cell

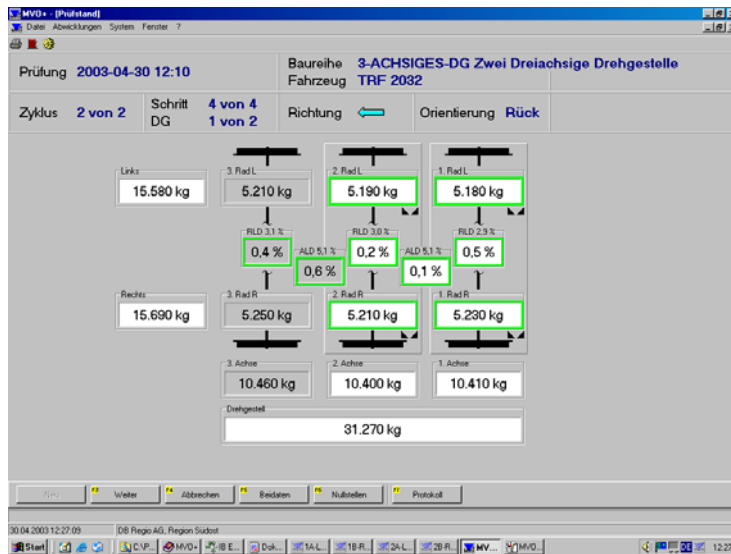


Two **RLW-G-2005** elements form an axle test bench. The wheel lifting forces of a bogie may be captured by four **RLW-G-2005** elements with intermediate spacer rail components. As such all common bogies may be weighed in a single operating step.,

The rail gauge is 1435 mm (+3 / - 2 mm) although any gauge may be set as each RLW is mounted individually.



Use of **RLW-G**  
for a 2-axle bogie to record  
wheel loads



Test bench software MVO +  
to TRF 0014 (German Railways)



Weighing indicators D 70b



(Weighing indicators D 70  
see product info no. 664)

## PC hardware

We recommend our **Premium-PC PLR 200** or a notebook. Alternatively the customer's own PC hardware may be used if the minimum requirements are fulfilled. Please refer to our product information no. 641 „PLR 200“.

## Application

- Measuring of wheel forces (wheel lifting forces)
- Recording of the relative differences of wheel and axle weights
- Displaying of wheel, axle, bogie differences (with optional MVO+ software)

- Technical data subject to modification without notice-

**Pfister Waagen Bilanciai GmbH** – Stätzlinger Str. 70 – 86165 Augsburg  
T: 0821 / 7949-0 – F: 0821 / 7949-245 – E: sales@pfisterwaagen.de  
Internet: www.pfisterwaagen.de

**Product information**  
**no. 615**  
05/2005