

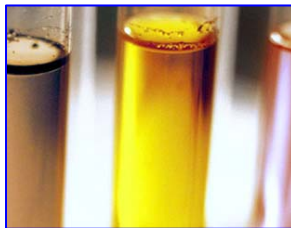


# Weightron in Action

*with*

# HEXION™

Specialty Chemicals



**Sloping weighbridge technology solves sticky problem for leading chemical company**

A special sloping 50 tonne Eurodeck pit weighbridge, designed and built by Weightron Bilanciai Ltd, has solved a 'sticky' problem for Hexion Specialty Chemicals at their Peterlee plant.

**WEIGHTRON** BILANCIAI  
**BILANCIAI**  
INDUSTRIAL WEIGHING SPECIALISTS   
**GROUP**



## Sloping weighbridge technology solves sticky problem for leading chemical company

A special sloping 50 tonne Eurodeck pit weighbridge, designed and built by Weightron Bilanciai Ltd, has solved a 'sticky' problem for Hexion Specialty Chemicals at their Peterlee plant.

Hexion Specialty Chemicals is the world's largest producer of binder, adhesive, coating and ink resins for industrial applications, employing over 7000 people worldwide. When the company decided they needed to replace their aging pit weighbridge at Peterlee, they realised that finding a replacement



was far from straightforward. The layout and terrain of the site mandate that the weighbridge has to operate on a gradient of 1 in 20! Having contacted a number of weighbridge manufacturers, Hexion found that Weightron Bilanciai were the only supplier who had the expertise and technology to take on the project.

Weightron's sloping bridge technology uses special load cell mounting assemblies in conjunction

with the weighbridge design to ensure correct load introduction and a stable structure, even under vehicle braking conditions. Weighbridges can be installed to accommodate slopes either from end to end, side to side across the width of the bridge, or a combination of both.

In addition to the prerequisite that the weighbridge had to operate on a gradient, the project set a number of other structural and logistical challenges. Firstly the new bridge had to fit within the confines of the existing pit with the minimum of modifications. Secondly, in order to minimise plant disruption, the old bridge had to be removed, pit modifications made and the new bridge installed, all within a five day window. Finally the shallow nature of the pit required the Eurodeck to be approximately 30 mm lower in height than normal.



Weightron's Area Sales Manager Terry Howe is justifiably proud of his company's achievement and as he explains: "We knew from the outset that we had a very tight schedule and until the old weighbridge was removed we were not sure what we might find. The existing weighbridge was removed on the Monday morning, revealing the need for some remedial work to the concrete pit. At

*this stage the layout of the special mounting base plates could be determined and these were then fabricated back at our workshops in Chesterfield, ready for the start of the install on Wednesday. By Thursday the weighbridge had been installed ready for calibration on the Friday morning. The weighbridge was finally tested and certified fit for trade use by Friday afternoon, a few hours ahead of schedule. Special anti-slip paint applied to the weighbridge deck prevents vehicles slipping down the bridge in wet or icy conditions.”*

Hexion’s maintenance production manager Les Holdcroft is delighted with the installation and as he concludes: *“We knew we had set Weightron a tough challenge but they came through with flying colours, comfortably within the allotted time frame. The 15 metre weighbridge, which falls 750 mm along its length, is a crucial part of our operation and any installation delays would have caused serious production problems.”*





Weightron Bilanciai Ltd  
Titan Works  
Bridge Way-off Broombank Road  
Chesterfield Trading Estate, Chesterfield  
Derbyshire S41 9QJ  
Tel: 01246 260062 Fax: 01246 260844

[www.weightron.com](http://www.weightron.com) [www.weighingtalk.com](http://www.weighingtalk.com)  
[sales@weightroncb.co.uk](mailto:sales@weightroncb.co.uk)